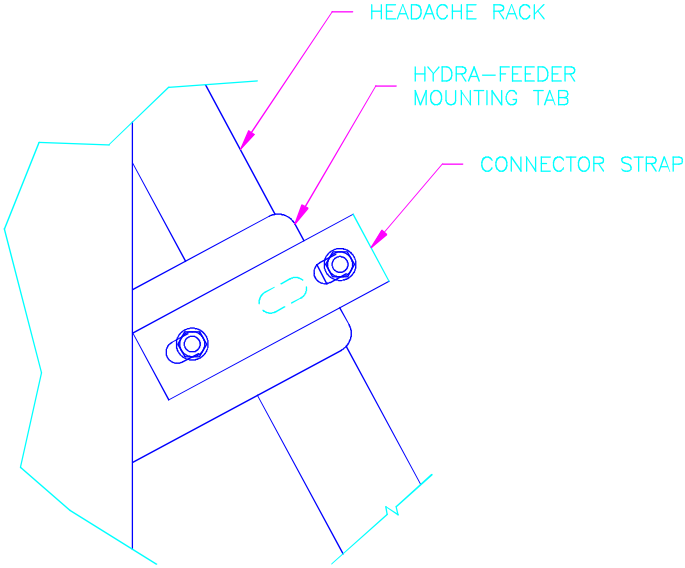
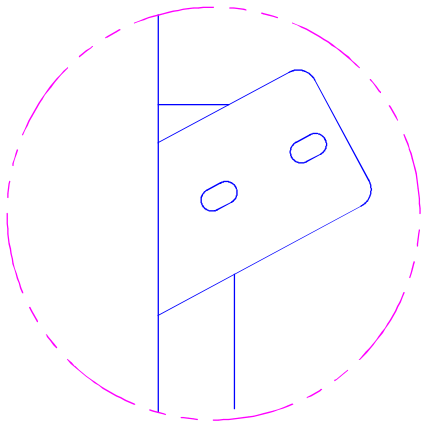


TOP VIEW — RIGHT SIDE



FRONT VIEW — RIGHT SIDE



KHFM-150 KIT IS USED TO MOUNT THIS STYLE OF HYDRA-FEEDER MOUNTING TAB TO A 150 SERIES HYDRA-BED.

1. SLIDE HYDRA-FEEDER FORWARD AGAINST THE HEADACHE RACK AND CENTER IT.
2. PLACE THE 5/16 U-BOLT AROUND THE HEADACHE RACK AND THROUGH THE SLOT NEAREST HYDRA-FEEDER.
3. PLACE CONNECTOR STRAP ON U-BOLT AND INSTALL WASHERS AND NUTS. TIGHTEN SECURELY.

TRIPLE C, INC.

P.O. BOX 248, SABETHA, KS 66534
(785) 284-3674 FAX (785) 284-3931

DWG PATH: \DWG\HF

DO NOT
SCALE
DRAWING

SCALE:
1/4

DRAWN BY:
CEDRIC HEINIGER
09/22/98

TITLE:
KHFM-150 INSTALLATION
INSTRUCTIONS

DRAWING NUMBER:
HF12-44

REV